

## APOLLO WTC-300

### WIND TURBINE CONTROLLER

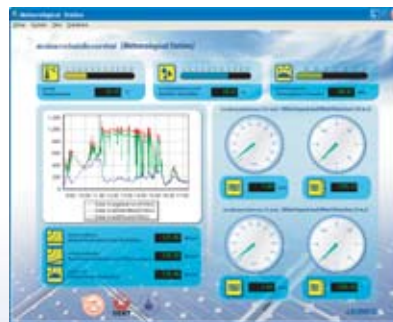
- Pulse Width Modulation (PWM) technology
- Operation with wind turbine and dummy load (pure resistive load)
- Communication interface with RS-232 serial port and alarm dry contact
- Low power consumption
- Wall mount and 19 inch rack mount case
- Digital input signal (option)
- Real-time monitoring software (option)
- ISO 9001:2000 and ISO 14001 certified factory



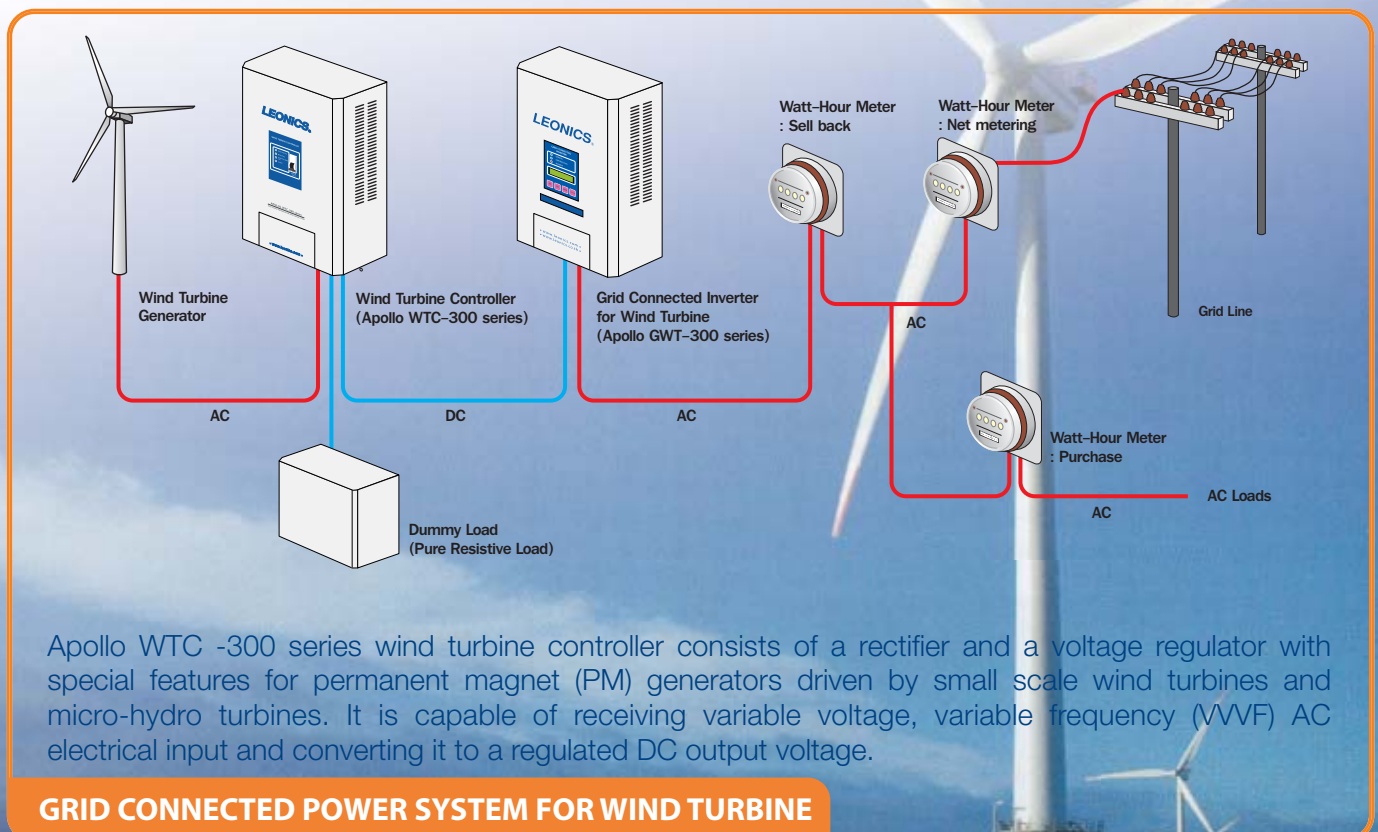
Wall mount case



Rack mount case



Real-time monitoring software (option)



Apollo WTC -300 series wind turbine controller consists of a rectifier and a voltage regulator with special features for permanent magnet (PM) generators driven by small scale wind turbines and micro-hydro turbines. It is capable of receiving variable voltage, variable frequency (VVVF) AC electrical input and converting it to a regulated DC output voltage.

### SPECIFICATIONS



MODEL		WTC-304	WTC-304/RM*	WTC-304M2	WTC-304M2/RM*	WTC-305	WTC-305/RM*
Recommend to use with Grid Connected Inverter		GWT-304	GWT-304/RM*	GWT-304M2	GWT-304M2/RM*	GWT-305	GWT-305/RM*
RATED POWER		4 kW		5 kW		6 kW	
SYSTEM	Technology	pulse Width Modulation (PWM)					
AC INPUT	Nominal voltage	220 - 240 Vac					
POWER SUPPLY	Voltage range	176 - 265 Vac					
	Frequency range	45 - 70 Hz					
	Phase connected	Single Phase					
WIND TURBINE GENERATOR	Power rating	4 kW		5 kW		6 kW	
	Type	three phase permanent magnet					
	Nominal voltage	220 Vac (3 phase 3 wires)					
	Peak voltage	280 Vac peak					
OUTPUT	Output voltage	160 - 310 Vdc					
	Output voltage limit	310 Vdc					
RECOMMENDED DUMMY LOAD	Pure resistive load	4 kW		5 kW		6 kW	
	Voltage range	220 - 240 V					
POWER CONSUMPTION		4 W					
INDICATOR	LED	Brake Release Operating Dumping Load Fail Alarm (overload, high temperature, over temperature, over voltage)					
COMMUNICATION INTERFACE	DB-9 connector	RS-232 serial interface port					
	Dry contact	alarm, short circuit brake release, control					
INPUT SIGNAL		digital signal (option)					
ENVIRONMENT	Temperature	0 - 45°C					
	Humidity	0 - 95 % (non - condensing)					
DIMENSION	W x H x D (approx. in cm)	37.5 x 47.5 x 22	48.5 x 19 x 49	37.5 x 47.5 x 22	48.5 x 19 x 49	37.5 x 47.5 x 22	48.5 x 19 x 49
WEIGHT	Approximate in kg.	23	11	23	15	26	15

\* The rack mount case models are not included the floor standing rack mount enclosure. Continuous product development is our commitment. In that manner, the above specifications may be changed without prior notice.

#### Authorized Distributor:

### LEO ELECTRONICS CO.,LTD.

119/50-51 MOO 8 BANGNA-TRAD RD., BANGNA, BANGKOK 10260 THAILAND.  
 Tel. 66-2746-9500, 66-2746-8708 Fax. 66-2746-8712  
<http://www.leonics.com> • e-mail : RNE@leonics.com

#### Authorized Dealer: